

Alternate Parking for Downtown during Streetscape Construction

N Railroad Street



W North Street and N First Street

Approx. 20
Angled
Parking Spots

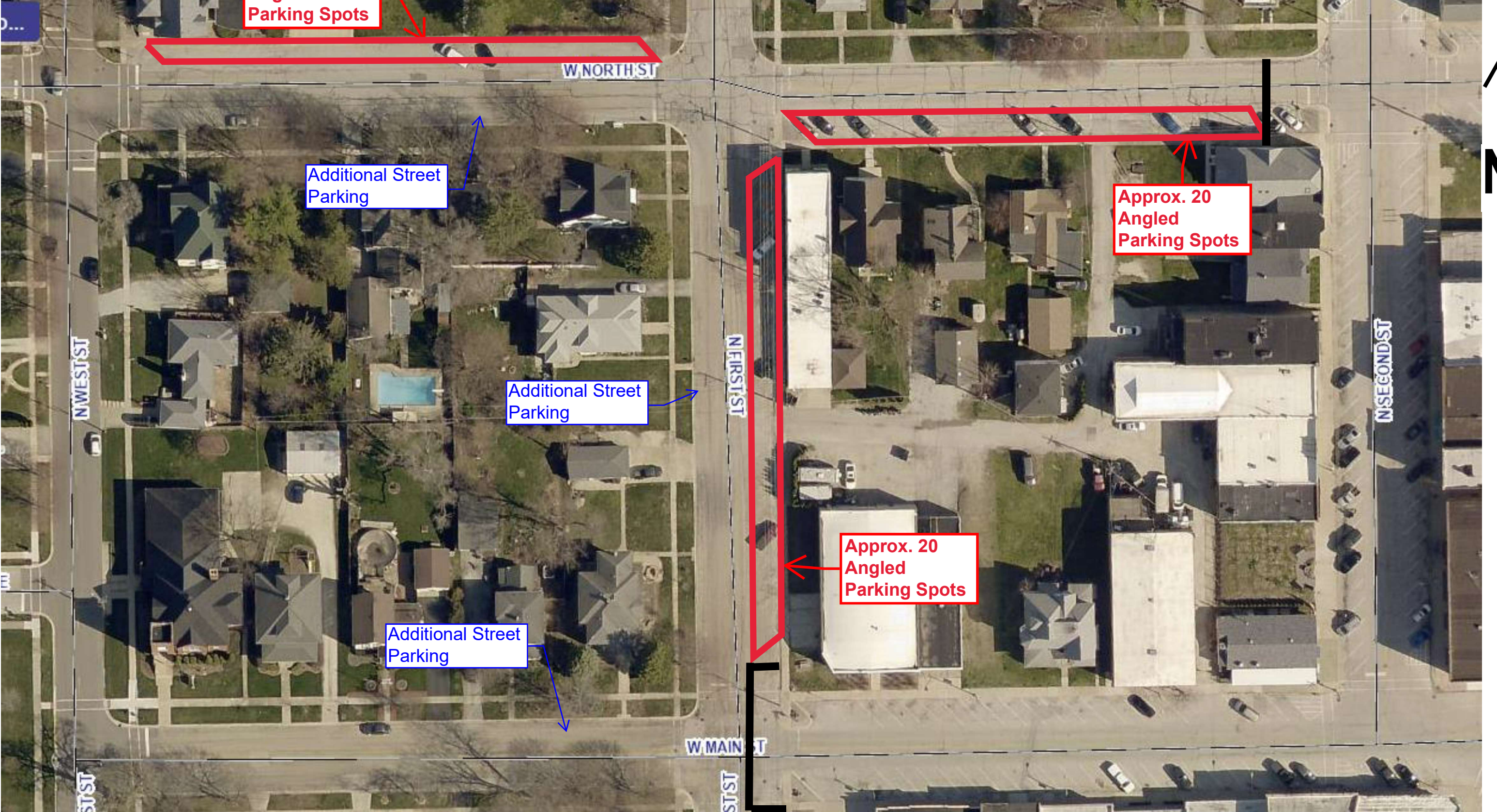
Additional Street
Parking

Additional Street
Parking

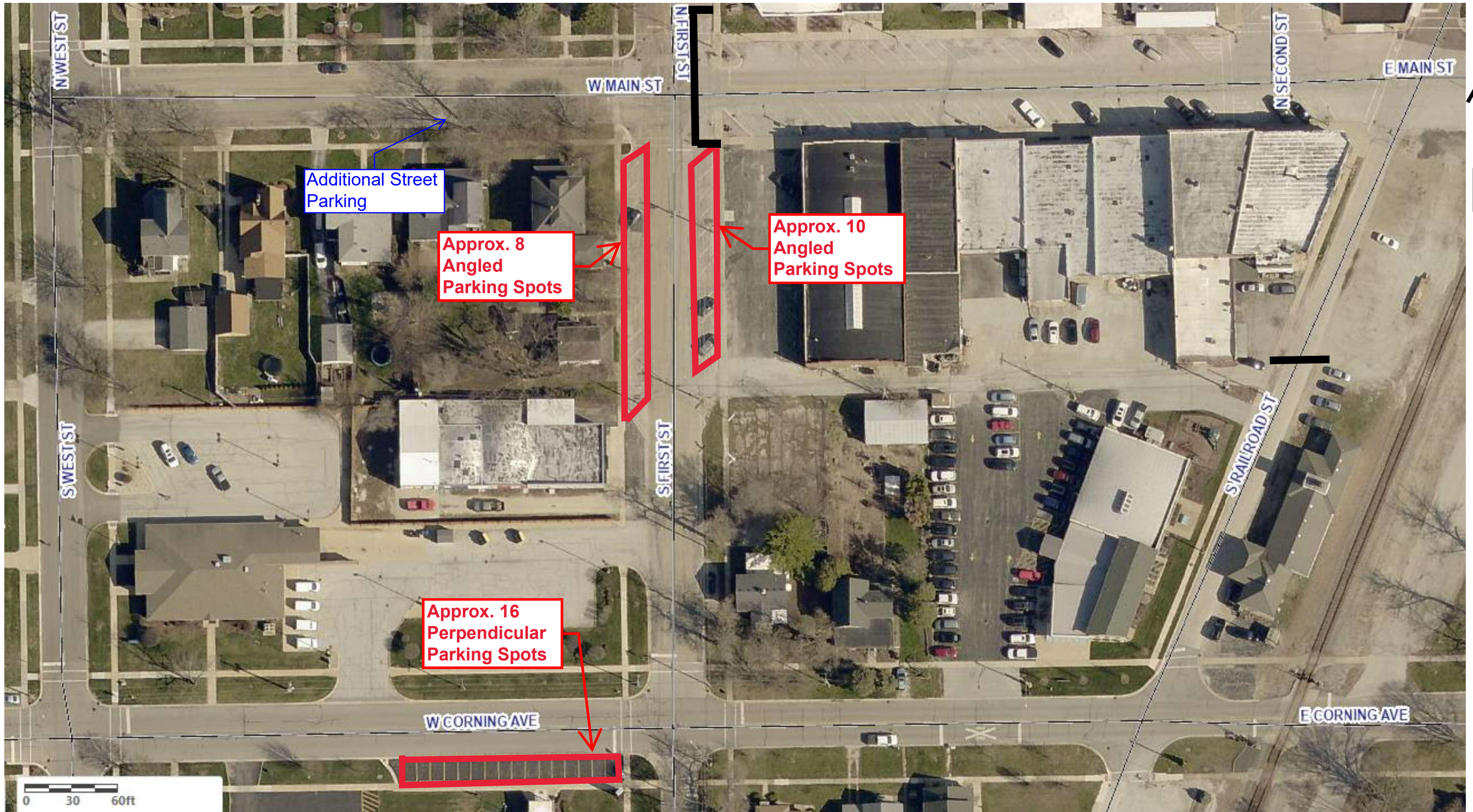
Additional Street
Parking

Approx. 20
Angled
Parking Spots

Approx. 20
Angled
Parking Spots



S First Street and W Corning Avenue



Additional Street
Parking

Approx. 8
Angled
Parking Spots

Approx. 10
Angled
Parking Spots

Approx. 16
Perpendicular
Parking Spots

